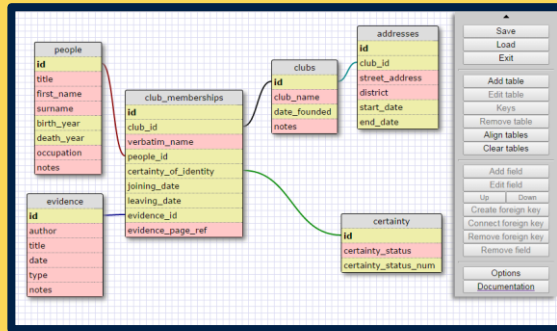




ords.ox.ac.uk

Online Research Database Service (ORDS)



Design your relational database

- Or import an existing database
- Data in spreadsheets can be imported and combined to form a database

Collaboratively add and edit data

- Add collaborators and assign them permissions
- Edit data via the online interface, or using popular database management software

Table data for club_memberships. This is the main data version.

records # 1 to 5 of 5 Page: 1 of 1 Go To Record:

id [auto increment]	club_id Links to table: clubs. Viewed field: club_name	verbatim_name	people_id Links to table: people. Viewed field: occupation	certainty_of Links to table: certainty. Viewed field: certainty_status
1	Brooks's	J. Albury Esq.	Gentleman	Probable
2	Beefsteak Club	The Hon. Julian Carstair	Gentleman	Definite
3	Carlton Club	Stephen	Doctor	Probable
4	The Athenaeum	Michael Swarney	Lawyer	Definite
5	Carlton Club	M. Swam??	Lawyer	Possible

Dataset List for Mondial

Dataset Name	Dataset Description	Query	Visibility	Static	Run query	Edit	Delete dataset
General big city query	A big city query (static)	select * from "city" WHERE population>1000000	public	false	Run query	Edit	Delete dataset
Even bigger cities	cities with a population of over 2 million	select * from "city" WHERE population>2000000	public	false	Run query	Edit	Delete dataset
Countries	the countries table	select * from "country" order by "population" desc	public	false	Run query	Edit	Delete dataset

Query data using query builder | Query data using SQL

Query your data and share the results

- Create and save database queries
- Export your results for analysis at the click of a button
- Share your data with the public

Data hosted securely by the University of Oxford

- Visit the Online Research Database Service website at: <http://ords.ox.ac.uk>
- Email the support team: ords@it.ox.ac.uk

